




ज्ञानरंगा घरोघरी

Yashwantrao Chavan Maharashtra Open University, Nashik – 422 222

7.3.1 : Landscape and Biodiversity Plantation on the University Campus

| Sr. No | Name of Crop / Plant | Area in Acres | No. of Plants |
|---|----------------------|---------------|---------------|
| 1. Horticulture Plantation | | | |
| 1 | Coconut | 31 | 1538 |
| 3 | Mango | 12 | 1396 |
| 4 | Jamun | 5 | 575 |
| 7 | Anola | 2.5 | 242 |
| 5 | Cashewnut | 2.5 | 262 |
| 6 | Sapota | 3 | 310 |
| 8 | Guava | 2.5 | 474 |
| 9 | Tamarind | 2.5 | 270 |
| 10 | Grapes | 2 | 1317 |
| 11 | Litchi | 2 | 203 |
| 12 | Coffee | 2 | 1538 |
| 13 | Custard Apple | 1 | 306 |
| 15 | Avocado | 1 | 24 |
| 16 | All in Spices | 0.5 | 10 |
| 17 | Drumstick | 0.5 | 85 |
| | Sub-total in acres | 70 | 8550 |
| 2. Forestry Plantation | | | |
| 1 | Eucalyptus | | 7500 |
| 2 | Australian Babul | | 5500 |
| 3 | Subabul | | 15000 |
| 4 | Silver Oak | | 4500 |
| 5 | Kanchan | | 5000 |
| 6 | Casuarina | | 3000 |
| 7 | Glyrisidia | | 2000 |
| 8 | Bamboo | | 12000 |
| 9 | Babul | | 8000 |
| 10 | Shiras | | 766 |
| 11 | Shisoo | | 385 |
| 12 | Bahawa | | 350 |
| 13 | Neem | | 300 |
| 14 | Raintree | | 279 |
| 15 | Kadamb | | 200 |
| 16 | Sandal Wood | | 150 |
| 17 | Karanj | | 133 |
| 18 | Kashid | | 117 |
| 19 | Pimpal | | 100 |
| 20 | Shivan | | 76 |
| 21 | Agasti | | 70 |
| 22 | Umbar | | 42 |
| 23 | Jakaranda | | 38 |
| 24 | Mohua | | 31 |
| 25 | Arjun Sadada | | 19 |
| 26 | Bhendi | | 15 |
| 27 | Vilayati Chinch | | 11 |
| 28 | Tembhurni | | 10 |
| 29 | Waras | | 6 |
| | Sub-total Acres | 35 | 65598 |
| 3. Bund Plantation | | | |
| 1 | Coconut | 5 | 540 |
| 2 | Jack Fruit | 5 | 430 |
| | Sub-total in acres | 10 | 970 |
| Grand Total Biodiversity on Campus | | 115 | 75118 |



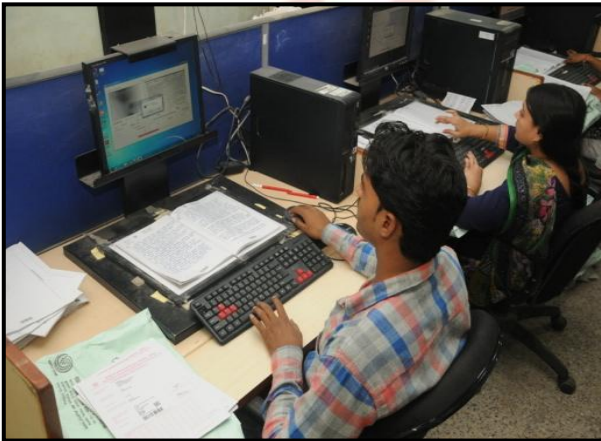

Head and Senior Scientist,
Krishi Vigyan Kendra,
YCMOU, Nashik.
Head & Senior Scientist
KRISHI VIGYAN KENDRA
YCMOU, Nashik-422 222



Yashwantrao Chavan Maharashtra Open University, Nashik – 422 222

7.3.1 Photographs of Institutional distinctiveness

1. Technology enables Learner Support

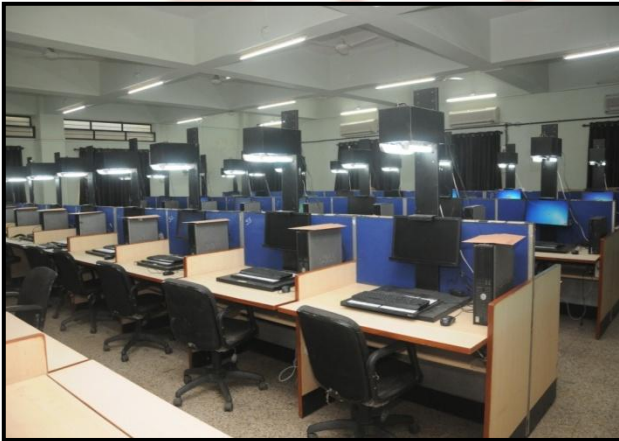


2. Penetration into Rural, Remote and Tribal Areas





3. Modern Infrastructure Facilities



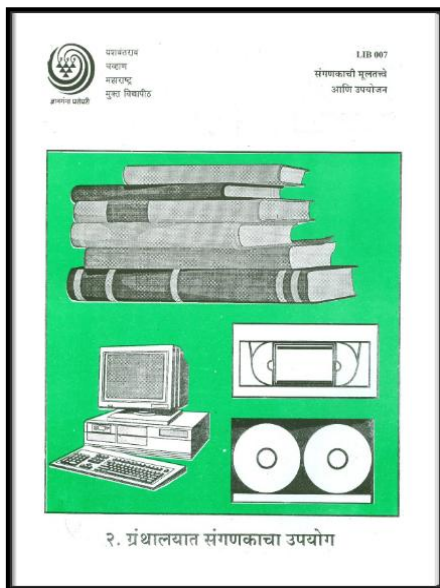
ज्ञानगंगा घरोघरी

4. Landscaping the Campus



5. National / International Recognition



[illegible][illegible][illegible]